

Product datasheet



sHLA-C*08:01

Cw*08:01, Cw*0801, C*0801, C0801
Cw0801, C*08, C08, Cw*08, Cw08, Cw8

Serological Name	Cw8
Peptide Load	Endogenous
Modification	Unmodified
Conjugation	Unconjugated
SKU	C0801

Product Description

Allele Name	C*08:01 B2m
HLA Class	HLA Class I
HLA Gene Locus	HLA-C
Alternative Allele Name A Chain	Cw*08:01, Cw*0801, C*0801, C0801, Cw0801, C*08, C08, Cw*08, Cw08, Cw8
Alternative Allele Name B Chain	-
Description	Recombinant, truncated Class I soluble Human Leukocyte Antigen (sHLA), naturally folded and glycosylated, loaded with endogenous peptides.
Serological Name	Cw8
Serological Split	-
Bw4/Bw6 Assignment	Bw6
Bw4/Bw6 Sequence	SLRNLRG
Allele Frequency [World Population]	
A chain	5.4%
B chain	-

Associated products

[C0801bio](#)
[C0801pe](#)

Product Specification

Product name	HLA-C*08:01
HLA Species	Human
Host Cell Line Species	Human
Clone Designation	C6
Tail Specification	None
Peptide Load	Endogenous
Modification	Unmodified
Conjugation	Unconjugated
Complexity	Monomer
Protein Format	Recombinant, truncated, soluble, non-modified, non-labeled, endogenously loaded
Storage Temperature	4 °C (This product should be stored undiluted)
Form	Liquid
Concentration	1000.0 µg/ml
Formulation	PBS/0.02% Sodium Azide
pH	7.4
Purification Method	Affinity Chromatography
Grade	Research Use Only [RUO]
Authentication Verification	Sequence Based Typing

Protein Sequences

Alpha Chain Sequence	CSHSMRYFYT AVSRPGRGEP RFIAVGYVDD TQFVQFSDA ASPRGEPRAP WVEQEGPEYW DRETQKYKRQ AQTDRVSLRN LRGYYNQSEA GSHTLQRMYG CDLGPDRLL RGYNQFAYDG KDYIALNEDL RSWTAADTAA QITQRKWEAA RTAEQLRAYL EGTCVEWLR R YLENGKKTLLQ RAEHPKTHVT HHPVSDHEAT LRCWALGFYP AEITLTWQRD GEDQTQDTEL VETRPAGDGT FQKWAAVVVP SGEEQRYTCH VQHEGLPEPL TLR
Beta Chain Sequence	IQRTPKIQVY SRHPAENGKS NFLNCYVSGF HPSDIEVDLL KNGERIEKVE HSDLSFSKDW SFYLLYYTEF TPTEKDEYAC RVNHVTLSP KIVKWDRDM

Related Products

[C0802](#)
[A0201](#)
[A0301](#)
[B0702](#)

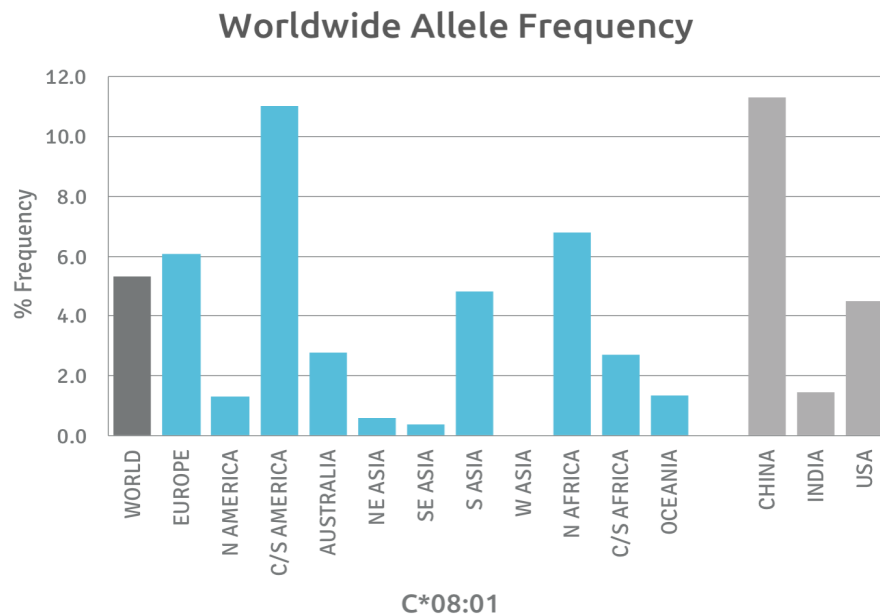
Applications

- HLA Sandwich ELISAs
- HLA Direct ELISAs
- HLA-Sera Antibody Assays
- HLA Controls in ELISA Assays
- HLA Assay Standards
- HLA Blocking Assays
- HLA Neutralizing Assays
- HLA Competition Assays
- HLA Bead Assays
- HLA Immunization Procedures

Recommended Antibodies

- W6/32
- Anti-B2m

Allele Frequency



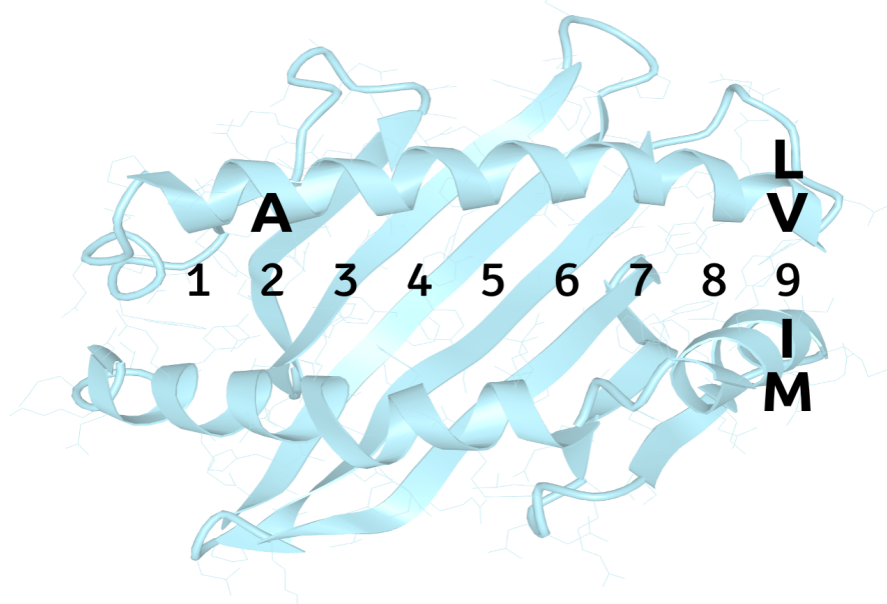
Please note:
ALL PRODUCTS ARE FOR RESEARCH USE ONLY. NOT FOR COMMERCIAL USE IN DIAGNOSTIC PROCEDURES.
For more information, please visit our Policies section on our website. For licensing inquiries, please contact

licensing@hlaprotein.com



Motif

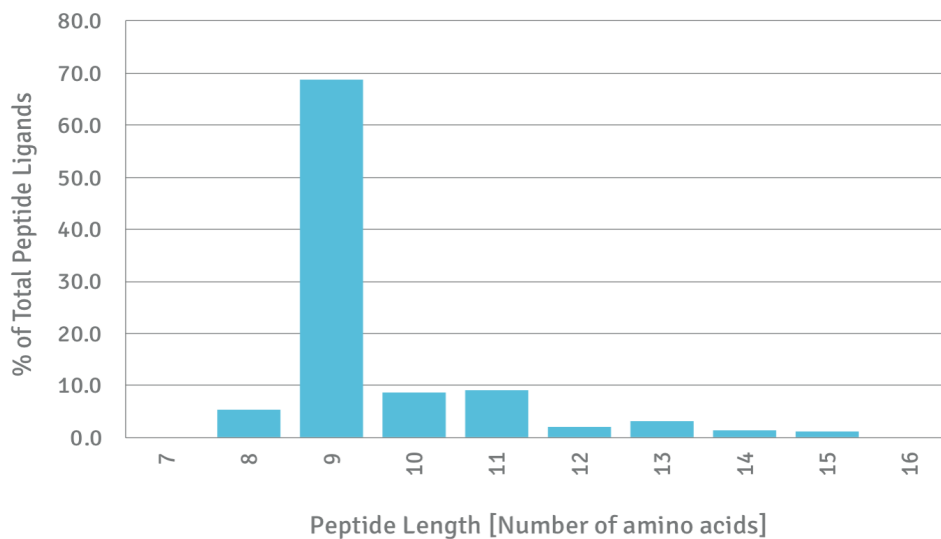
C*08:01 BINDING MOTIF



Length Distribution

HLA Length Distribution

C*08:01



Please note:

ALL PRODUCTS ARE FOR RESEARCH USE ONLY. NOT FOR COMMERCIAL USE IN DIAGNOSTIC PROCEDURES.

For more information, please visit our Policies section on our website. For licensing inquiries, please contact

licensing@hlaprotein.com

